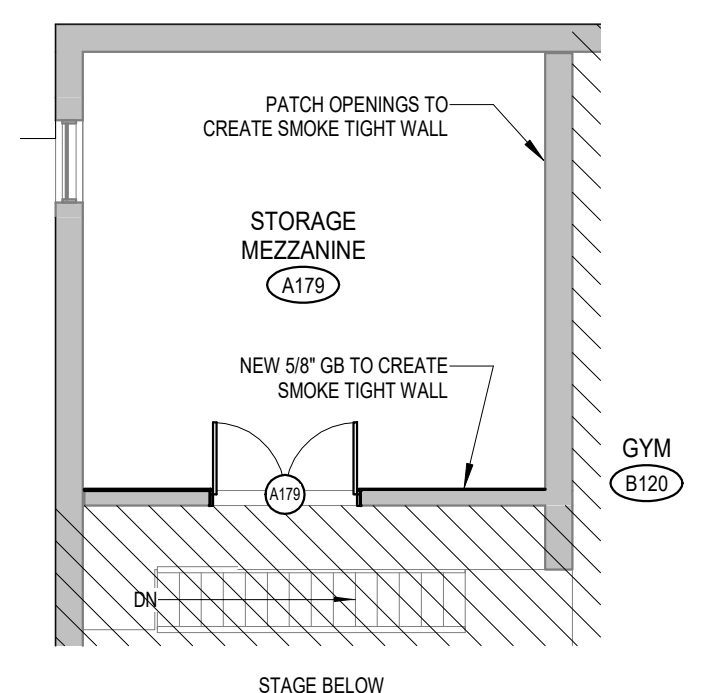
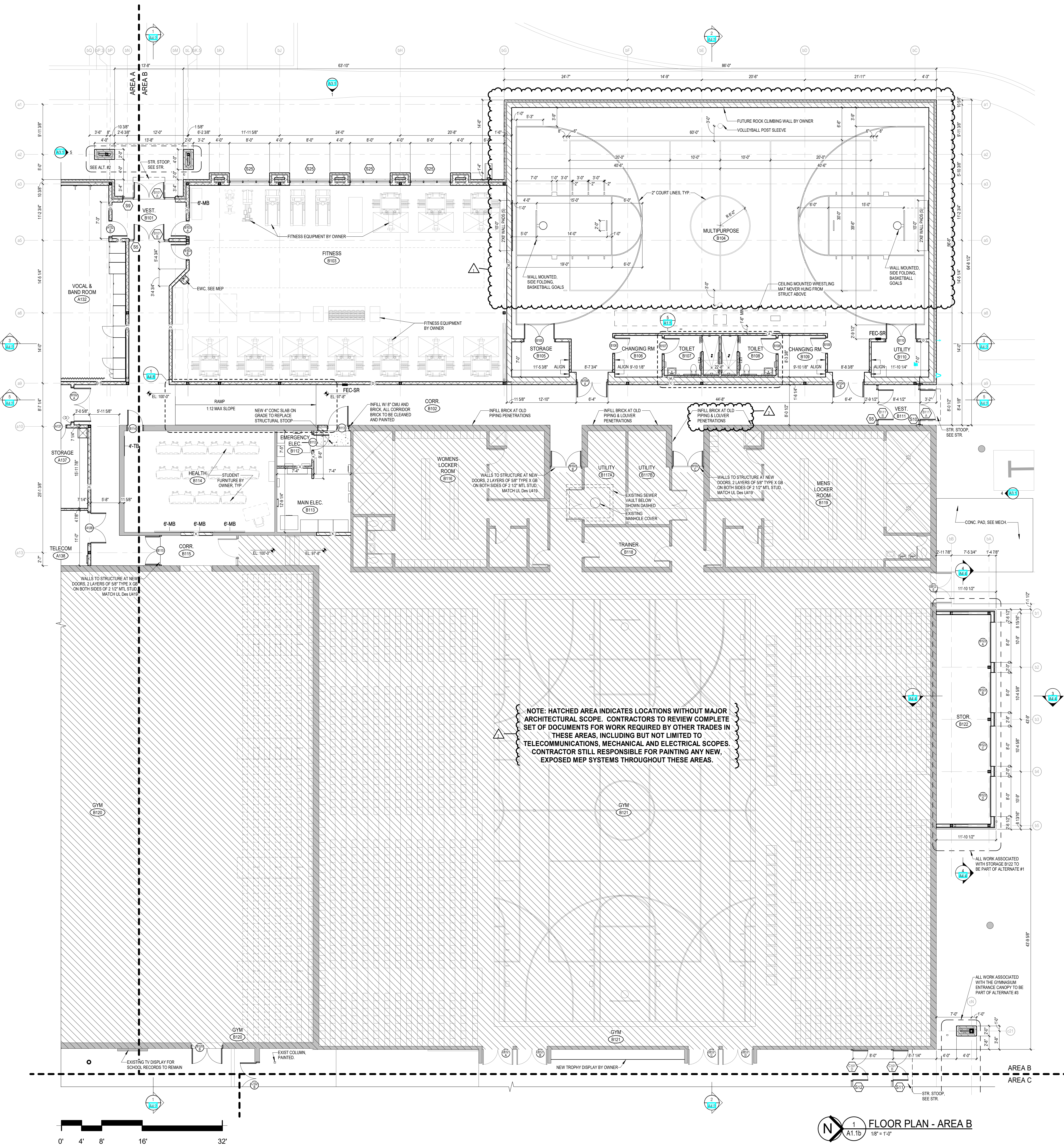


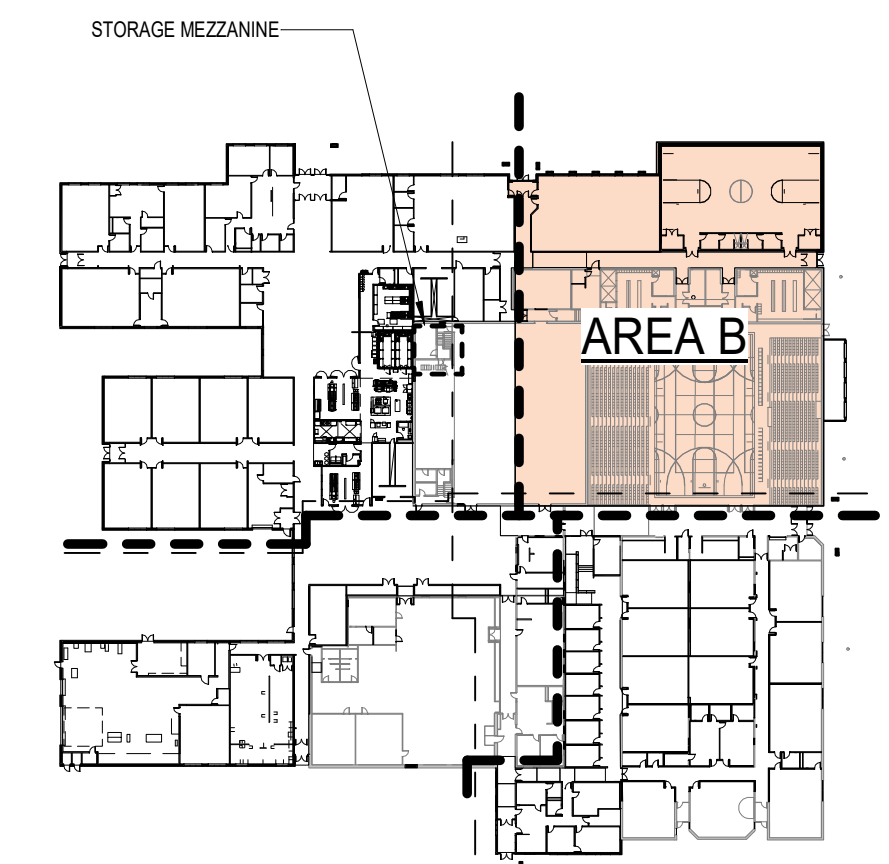


REVISION NO.	DATE	DESCRIPTION
1	12/15/22	ISSUED FOR PERMIT
2	1/25/23	ISSUED FOR PERMIT



2 STORAGE MEZZANINE
A1.1b
1/8" = 1'-0"

NOTE: HATCHED AREA INDICATES LOCATIONS WITHOUT MAJOR ARCHITECTURAL SCOPE. CONTRACTORS TO REVIEW COMPLETE SET OF DOCUMENTS FOR WORK REQUIRED BY OTHER TRADES IN THESE AREAS, INCLUDING BUT NOT LIMITED TO TELECOMMUNICATIONS, MECHANICAL AND ELECTRICAL SCOPES. CONTRACTOR STILL RESPONSIBLE FOR PAINTING ANY NEW, EXPOSED MEP SYSTEMS THROUGHOUT THESE AREAS.



KEY PLAN - AREA B



1 FLOOR PLAN - AREA B
A1.1b
1/8" = 1'-0"